

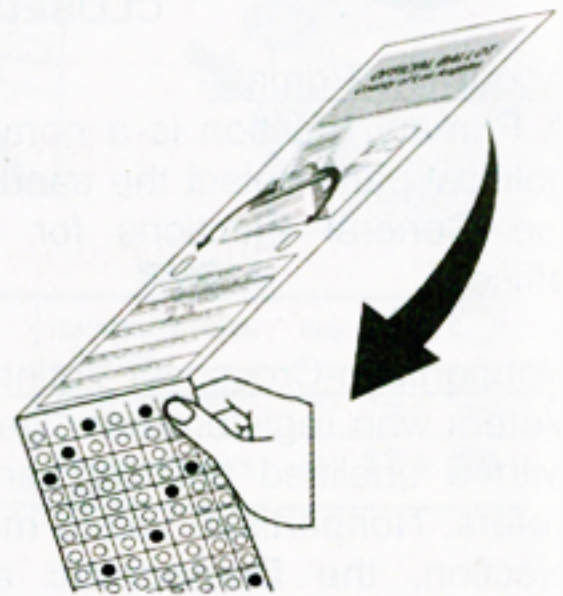
Write-In Voting Instructions

(Write-in votes are valid for qualified write-in candidates only)

TO VOTE FOR A PERSON NOT LISTED ON THE BALLOT:



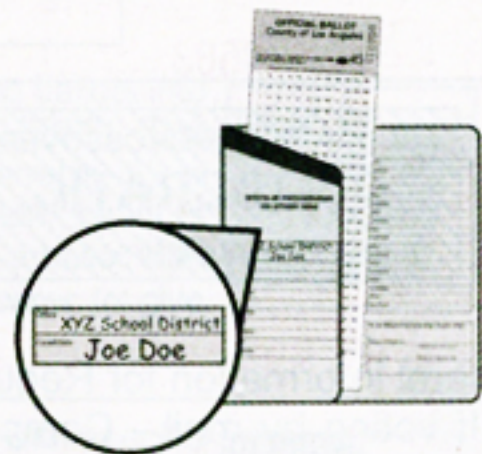
POLLING PLACE VOTING: Write both the qualified candidate's office title and name in the space provided on the write-in long stub portion of ballot.



Fold stub over voted portion of ballot and return to pollworker.

VOTING BY MAIL: Write both the qualified candidate's office title and name on the inside of the gray write-in ballot secrecy sleeve.

Enclose ballot card in write-in ballot secrecy sleeve and place in lavender return envelope.



Do not write a candidate's name and also fill in a voting position on the ballot card for the same office. This will result in an overvote and your vote for the contest will not count.

LIST OF QUALIFIED WRITE-IN CANDIDATES, if any, is available at the polling place and is posted on our website at www.lavote.net eleven days prior to elections.